



PATINA
MALDIVES • FARI ISLANDS

THE BEACH HOUSE
BY PATINA MALDIVES

THE BEACH HOUSE

This unique, two-storey, three-bedroom villa has a rooftop terrace and a large private 21m pool set within the lush green of an enormous tropical garden.

Our largest villa offers myriad experiences within its luxurious layout. The interior space is generous, airy and mellow with warm, natural colours.

Outside, two levels of private space of different character await you. Both give you views over your verdant tropical garden to the pristine white beach, turquoise lagoon and, as night falls, the magnetic amber glow of sunset.



AT A GLANCE

Two-storey, three-bedroom Beach House set within the lush green of an enormous tropical garden

21-meter outdoor pool complete with deckchairs

Ground floor houses an open-concept bar and dining space. The second floor features a large outdoor dining deck

Outdoor campfire space with expansive covered entertainment area

Triple glazed floor-to-ceiling windows to minimise noise and increase privacy

Custom design furniture by MK27 and Norm Architects







OCCUPANCY

Sleeps nine (six adults and three children)

BED

King bed + two double beds
+ three kid's beds or cots available on request

VIEW

Garden, beach and ocean views

CHECK-IN

2.00pm

CHECK-OUT

12.00pm

SIZE

1,800 sqm (19,375 sqft)

[Floorplans](#)

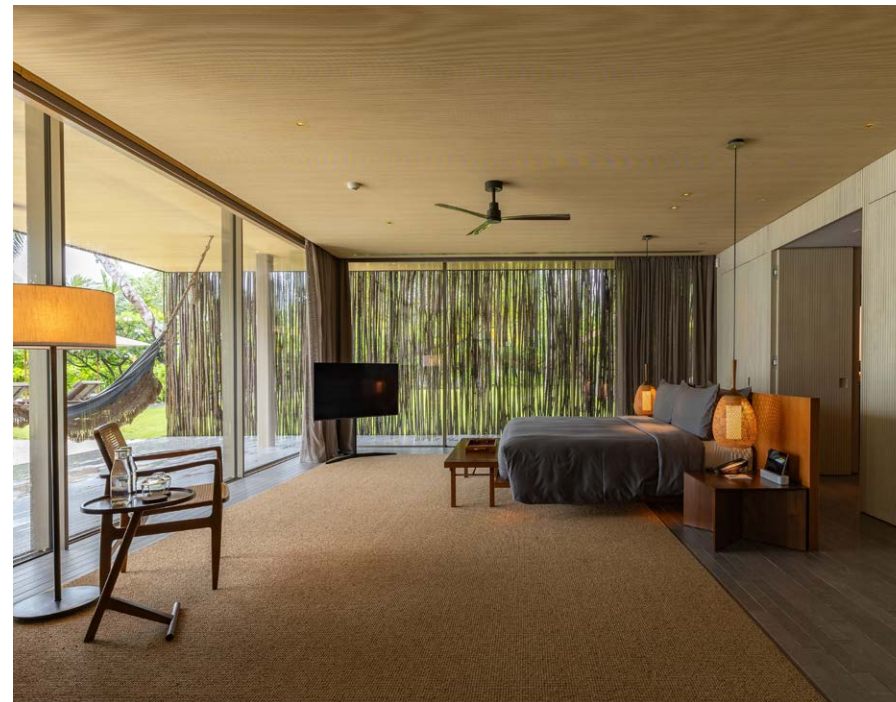


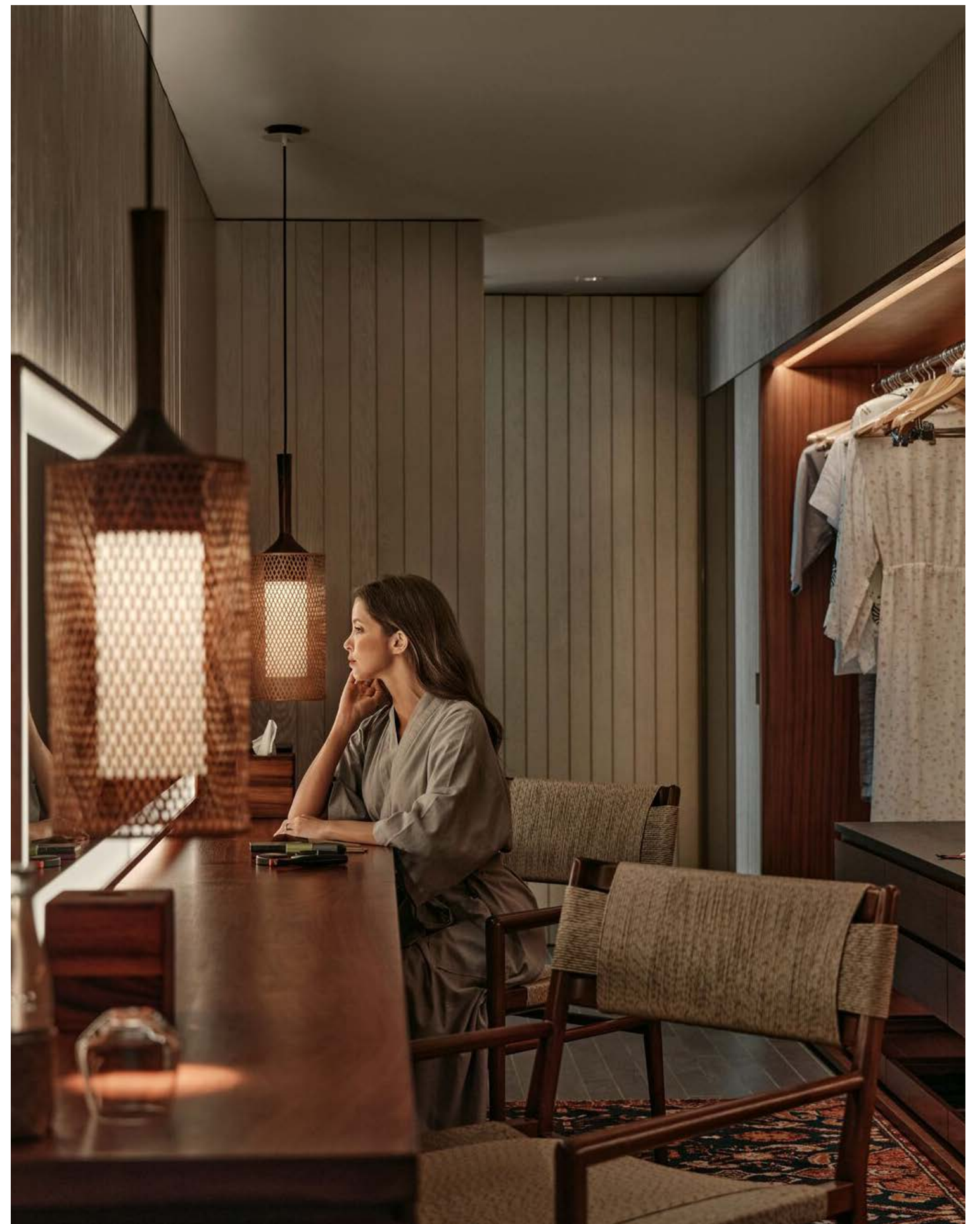


FEATURES & AMENITIES

Our largest villa

- Roof terrace
- Floor-to-ceiling windows on three sides of villa with blackout blinds
- Enormous private garden with large pool
- Outdoor entertainment deck
- 3 oversized bathtubs
- Rain showers
- Double basins
- Vanity table
- Refreshment centre
- Dining area
- 3 Smart TV
- Tablet
- PlayStation, Xbox and Nintendoon request
- WiFi







[BOOK NOW](#)



PATINA
MALDIVES • FARI ISLANDS

T +960 4000 555
events.maldives@patinahotels.com
patinahotels.com/maldives