

# The Whale Shark of Sumbawa

Guide Book

Explore the underwater world with Amanwana, bringing guests closer to the largest living non-mammalian vertebrate on the planet, the Whale shark.

Located just east of Moyo Island, Saleh Bay is known as the home of the second-largest Whale shark (*Rhincodon typus*) population on earth with at least 99 known Whale sharks inhabiting its waters year-round. Unesco also recognised the presence of Whale sharks in the bay, having added the area to its Biosphere Reserve list in 2019. In the presence of an experienced guide from Konservasi Indonesia - a non-profit organisation leading conservation in the area - guests can experience these magnificent creatures first hand and learn how to protect their future.

# The Route



AMANWANA

Moyo Island

Satonda Island

Mt. Tambora

Sumbawa Besar

Saleh Bay

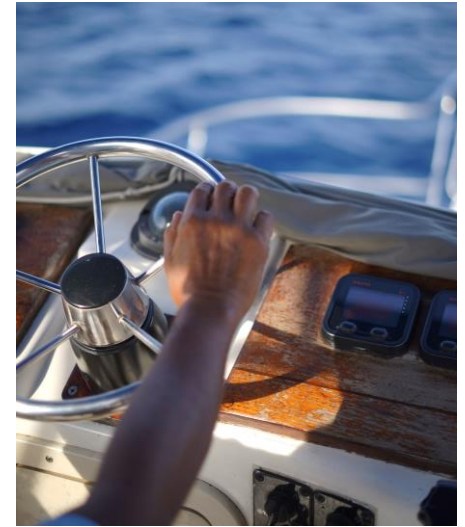
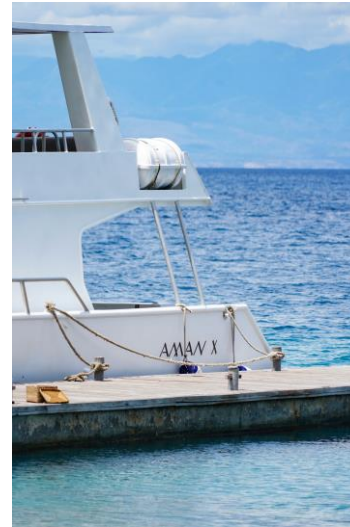
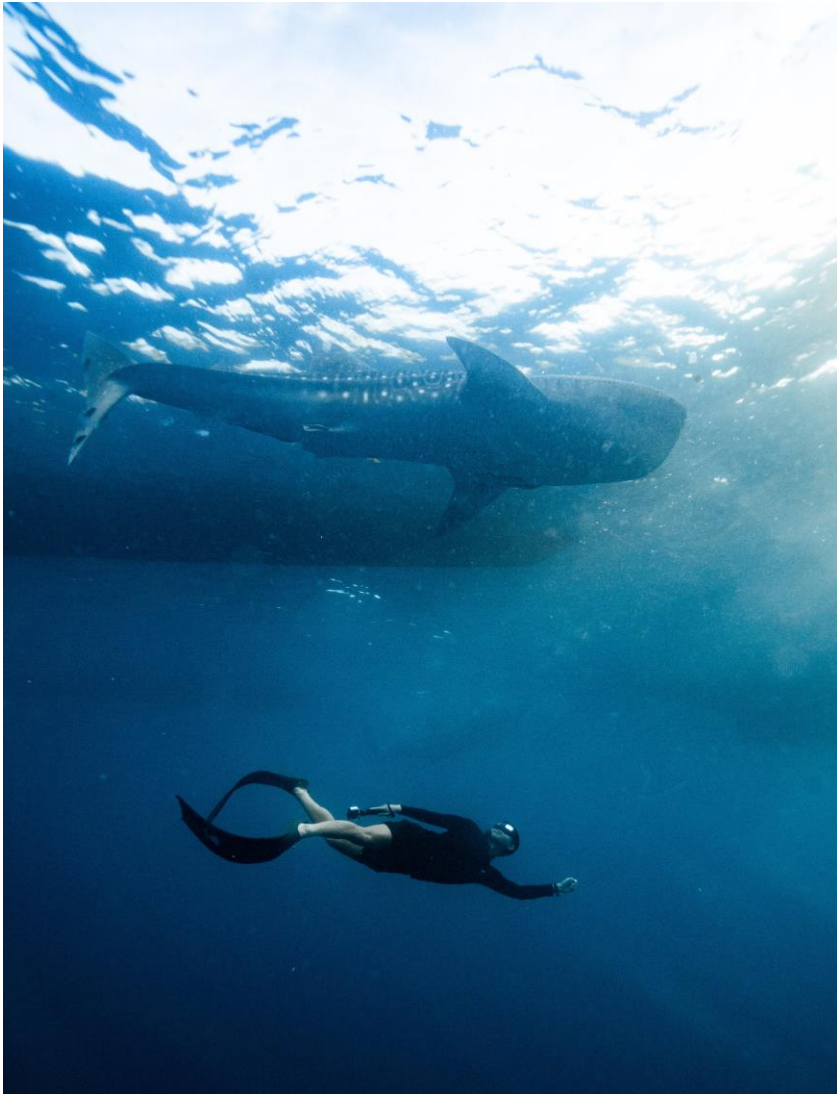
Labuan Jambu

SUMBAWA ISLAND

## Journey at a glance:

- 4.00 am Leave Amanwana
- 5.45 am Arrive in a Bagang at Saleh Bay
- 6.00 am Observe Whale sharks
- 7.00 am Interactive lectures to learn more about Whale sharks
- 8.00 am Travel back to Amanwana

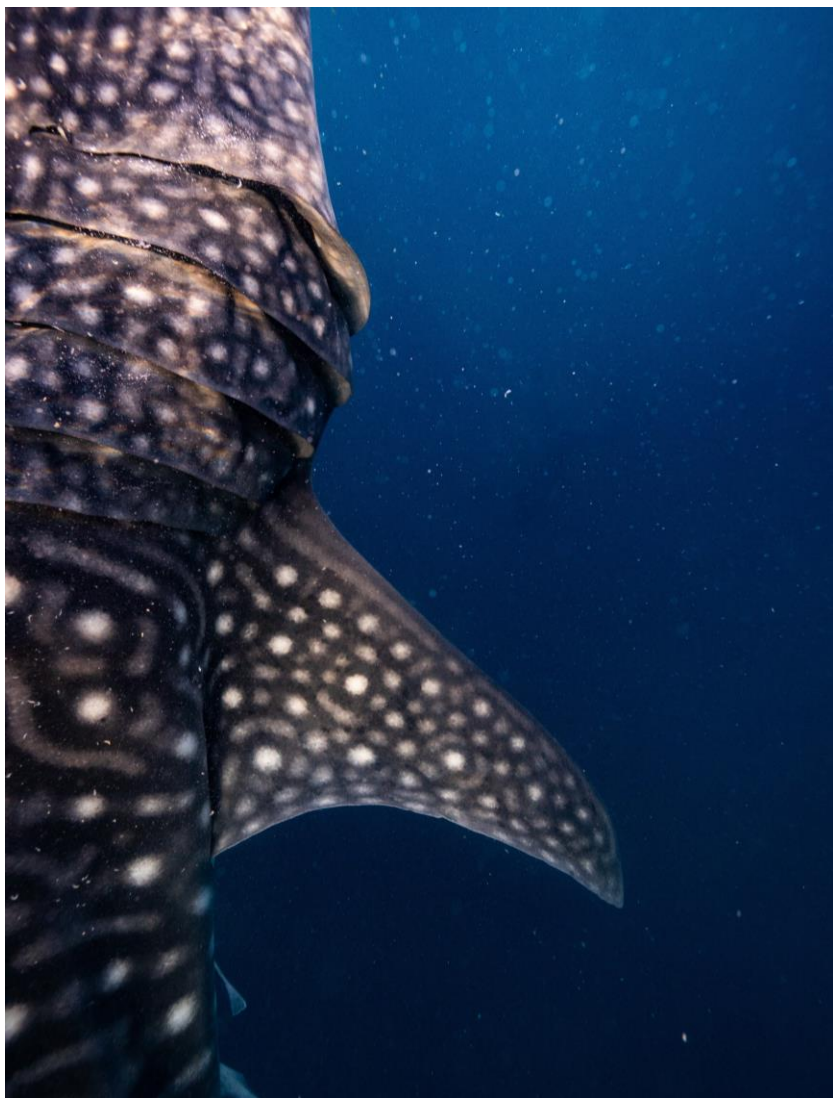
## The Journey



As the sun's first rays light up over Mt Tambora, board Amanwana's dedicated speedboat and take a relaxing two-hour cruise to Saleh Bay. To start the day, the resort's chefs prepare a gourmet breakfast which is enjoyed on board, before entering the calm waters of the bay with an experienced guide for once-in-a-lifetime underwater experience.

NB/ We recommend a 4am departure from Amanwana to catch the 6am sunrise over Mt Tambora.

## The Package



### Amanwana Whale Shark Excursion

Number of guests	Price per guest
2 guests	IDR 24,000,000
3 guests	IDR 16,000,000
4 guests	IDR 12,000,000
5 guests	IDR 9,500,000
6 guests	IDR 8,000,000

\*Prices are subject to 21% government tax and service charge.

#### Inclusions:

- Return speedboat transfer from Amanwana to Saleh Bay
- Opportunity to see the Whale sharks from the boat or snorkel with them in the water
- Snorkeling gear
- Indulgent breakfast, and snacks
- Selected non-alcoholic beverages

NB/Diving with the Whale sharks is available with an additional surcharge

#### TERMS & CONDITIONS:

Advance booking is required. Maximum capacity of 6 guests. Aman reserves the right to withdraw this offer at anytime with 48 hours' notice. Payment and cancellation refer to Aman's standard payment and cancellation policy.

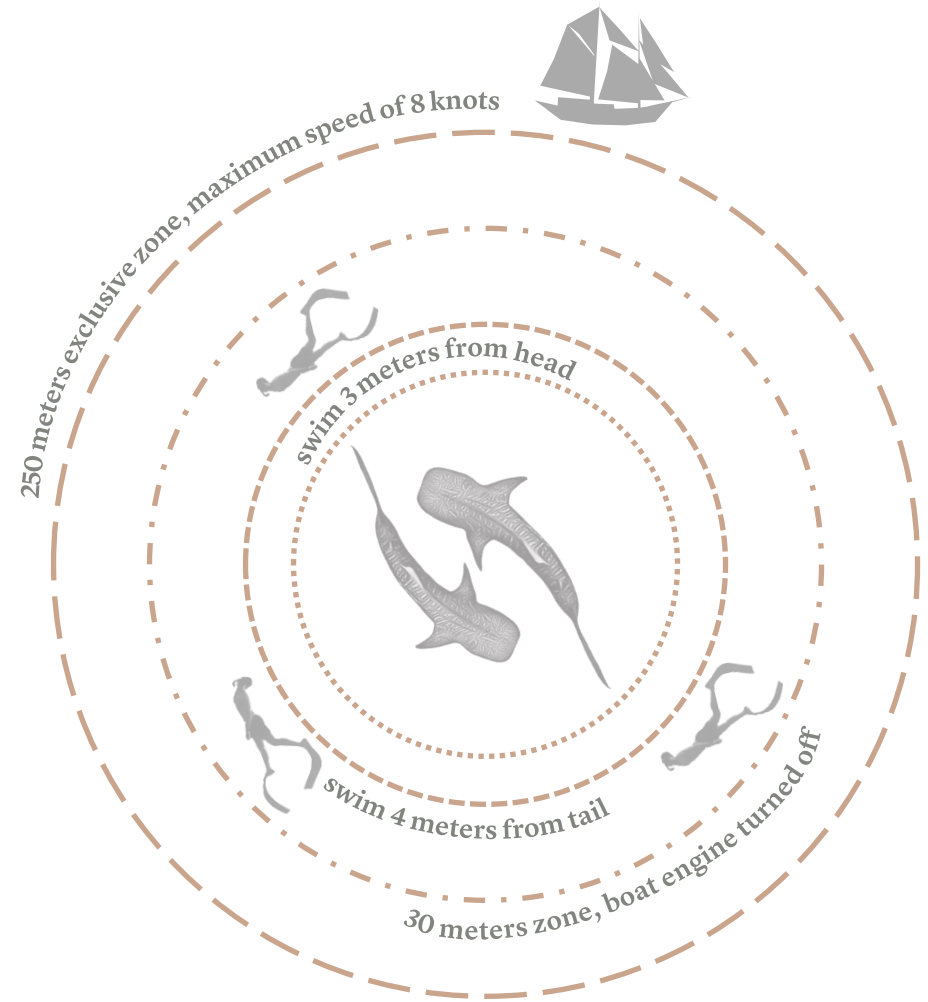
# Be Gentle to the Giants

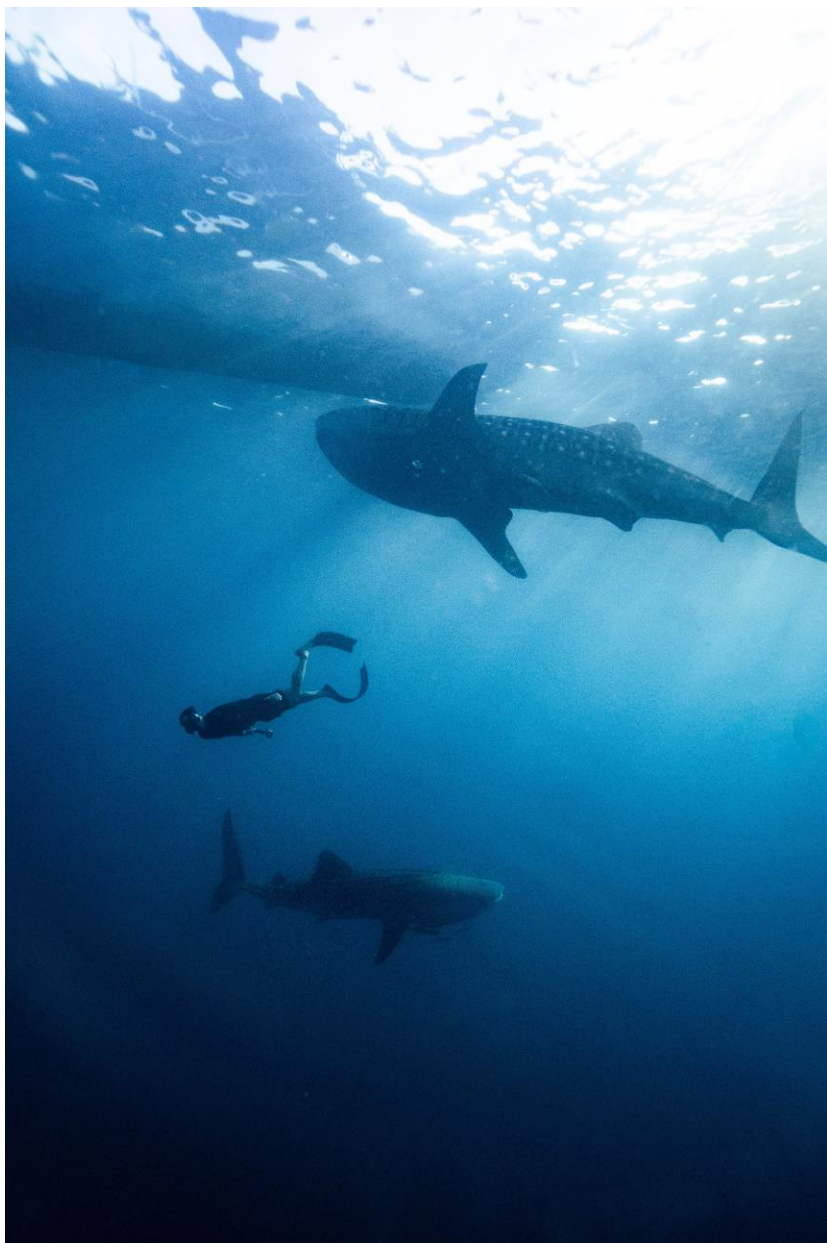
## Guidance for guests to follow

Guests participating in Amanwana's Whale Shark Excursion should closely follow the guidelines below:

- Do not use camera flash when taking pictures
- Dispose of rubbish in the trash bin provided
- Sea scooters and jet skis are strictly prohibited
- Remove all jewellery and any other accessories (especially anything metal)
- Wear appropriate swimwear for snorkeling/diving
- It is forbidden to not use coral-reef friendly sunscreen
- smoking is prohibited on board
- Do not make physical contact with Whale sharks (chasing, touching, pulling, riding)
- Do not make any sudden movements or loud noises around the Whale sharks
- Keep a distance of three meters from the side and head, four meters from the tail side (it is recommended to avoid the tail), and do not block the direction the Whale shark is swimming
- Only use the rope that has been provided for snorkeling activities
- During the interaction with Whale sharks, either snorkeling or diving, the capacity is limited to a maximum of 6 guests in the water and a maximum of 60 minutes for each rotation

**Note:** The above guidelines are based on existing codes of conduct for Whale shark ecotourism developed by the Ministry of Marine and Fisheries, Republic of Indonesia, as well as research studies by Konservasi Indonesia.





## FAQ

### **What should I bring on the excursion?**

Comfortable swimwear and coral-safe sunscreen.

### **Are sightings guaranteed?**

Saleh Bay is fortunate to have a large population of Whale sharks and Amanwana's guides are experts at locating them. Nevertheless, sightings cannot be guaranteed on every trip.

### **Is it possible for non-swimmers to enjoy the trip?**

Guests who don't feel confident to swim with the Whale sharks still have the opportunity to observe them from the boat.

### **Is the excursion seasonal?**

At Saleh Bay, Whale sharks can be observed all year round. However, in line with the moon's cycle, they tend to be most active and visible around the new moon.

### **Is it possible to dive with the Whale sharks?**

Diving is permitted. However, a safe distance of three to four meters should always be observed.

### **Is the experience bookable upon arrival?**

As the experience is limited to one excursion per day, with a maximum capacity of six guests, booking in advance is advised to avoid disappointment.

# Adopting Whale Shark

In collaboration with Konservasi Indonesia, guests can adopt a Whale shark that swims in Amanwana's nearby waters. Aiming to encourage greater awareness of the importance of conservation, adoption fees support crucial research and promote protection of endangered species.

## How it works?

- Team from Konservasi Indonesia will identify a Whale shark and then attach a satellite transmitter to their dorsal fin, with minimal disturbance to the animals.
- The transmitters' batteries last about two years, and data is relayed whenever the Whale shark's fin breaks the water's surface. The data is essential for Whale shark research, especially to observe their diving and migratory behavior.
- Adopters will have a chance to witness the tagging process at Saleh Bay and name your Whale shark.
- You will receive an official adoption certificate from Konservasi Indonesia and updates every 3 months on your Whale shark's movement.
- Adopters will have access to a tracker tool, to track their Whale shark in real-time.

## Contribution:

USD 10,000 per Whale shark

The contribution goes directly towards sustaining the year-round research and conservation efforts to ensure that these animals are safe and healthy in their natural habitat.



AMANWANA

Moyo Island, Sumbawa Regency  
West Nusa Tenggara, Indonesia

Tel. +62 (0) 371 22233 | +62 (0) 361 846 8585  
Email: indonesia.res@aman.com

[aman.com/resorts/amanwana](https://aman.com/resorts/amanwana)

AMANWANA